



# Technical Data

Specification & Capacities



## SPX424

S.N: \_\_\_\_\_



CDH: 14,9kW/20Hp



C+: 4,0kW/5,5Hp



8'6" – 27'11"



5290 lb



B30.5

[ft] [lb]



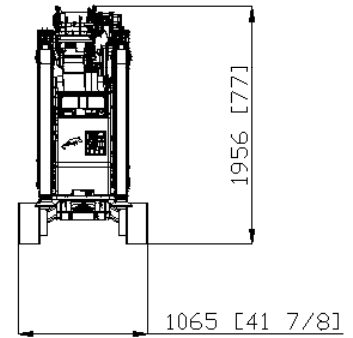
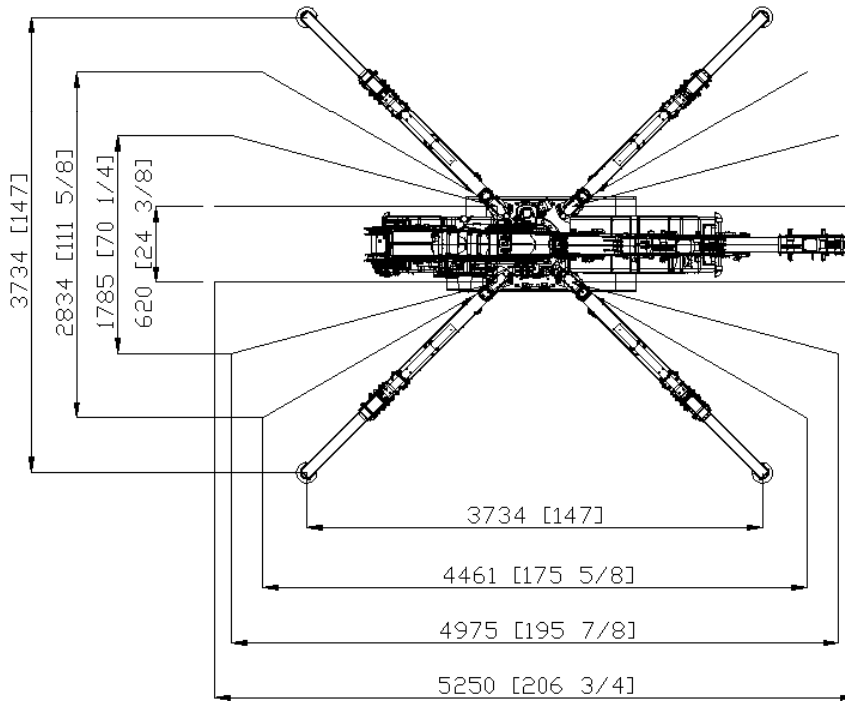
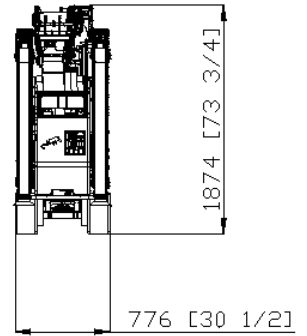
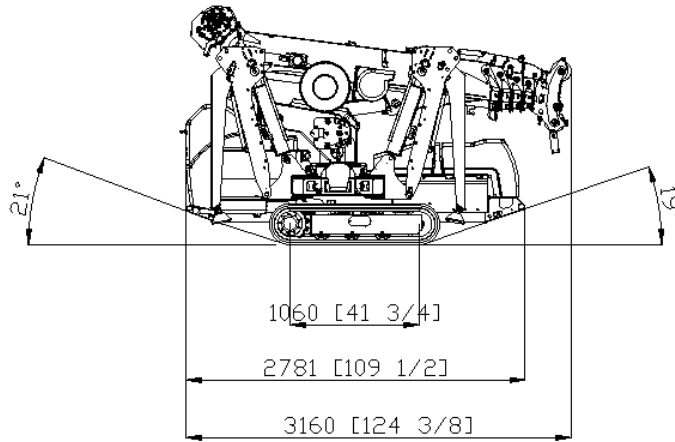
***SPX424***



Via Campardone, 7  
31014 Colle Umberto – Italy  
Tel. +39 0438 434443  
Mail: info@jekko.it  
Web: www.jekko.it

DATE	Dec. 1 <sup>st</sup> 2015
REV	13

## SPX424 - OVERALL DIMENSIONS



		lb
		4466
		440
<b>Tot.</b>		<b>4906</b>

	mph	1,1
	20°	
	lb/ft <sup>2</sup>	1124
	lb	4850

	0°/75°	14 s
	360°	1,5 rpm
	ft 8'06"-27'11"	26 s

	KUBOTA D722-E3B	<b>kW</b>	14,9kW 20Hp	
			GASOLINE	
			gal	2,6
	n°4 6V 240Ah	<b>kW</b>	24V-3F 4,0kW 5,5Hp	

**HOIST PERFORMANCE**

Layer	Max Line Pull	Normal Line Speed	High Line Speed
	lb	ft/min	ft/min
1	2.200 (*)	67.0	84.3
2	2.050 (*)	73.8	91.8
3	1.890 (*)	80.4	96.8
4	1.760	85.3	104.0

(\*) LMI limited at 1760 [lb]

Wire Rope	Diameter	Tot. Length	Max Load
	in	ft	lb
A4 ALC	1/4"	229	1980

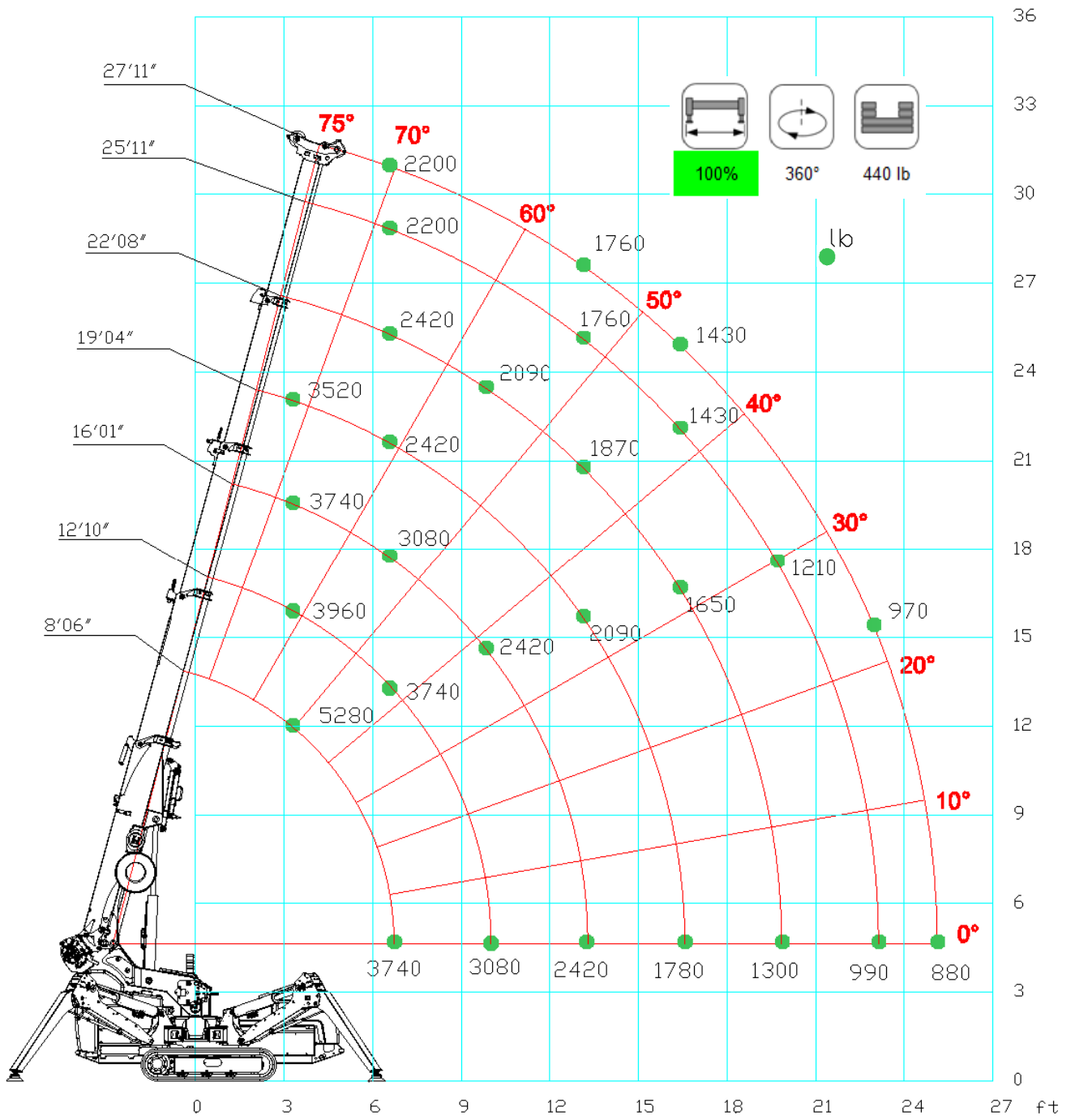
**HOOK BLOCK**

LOAD	No. of	
	Sheaves	Lines
5280	2	3
3520	1	2
1760		1


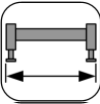
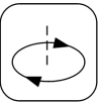





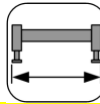
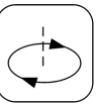

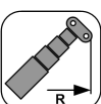
***SPX424***

## SPX424 – MAIN BOOM





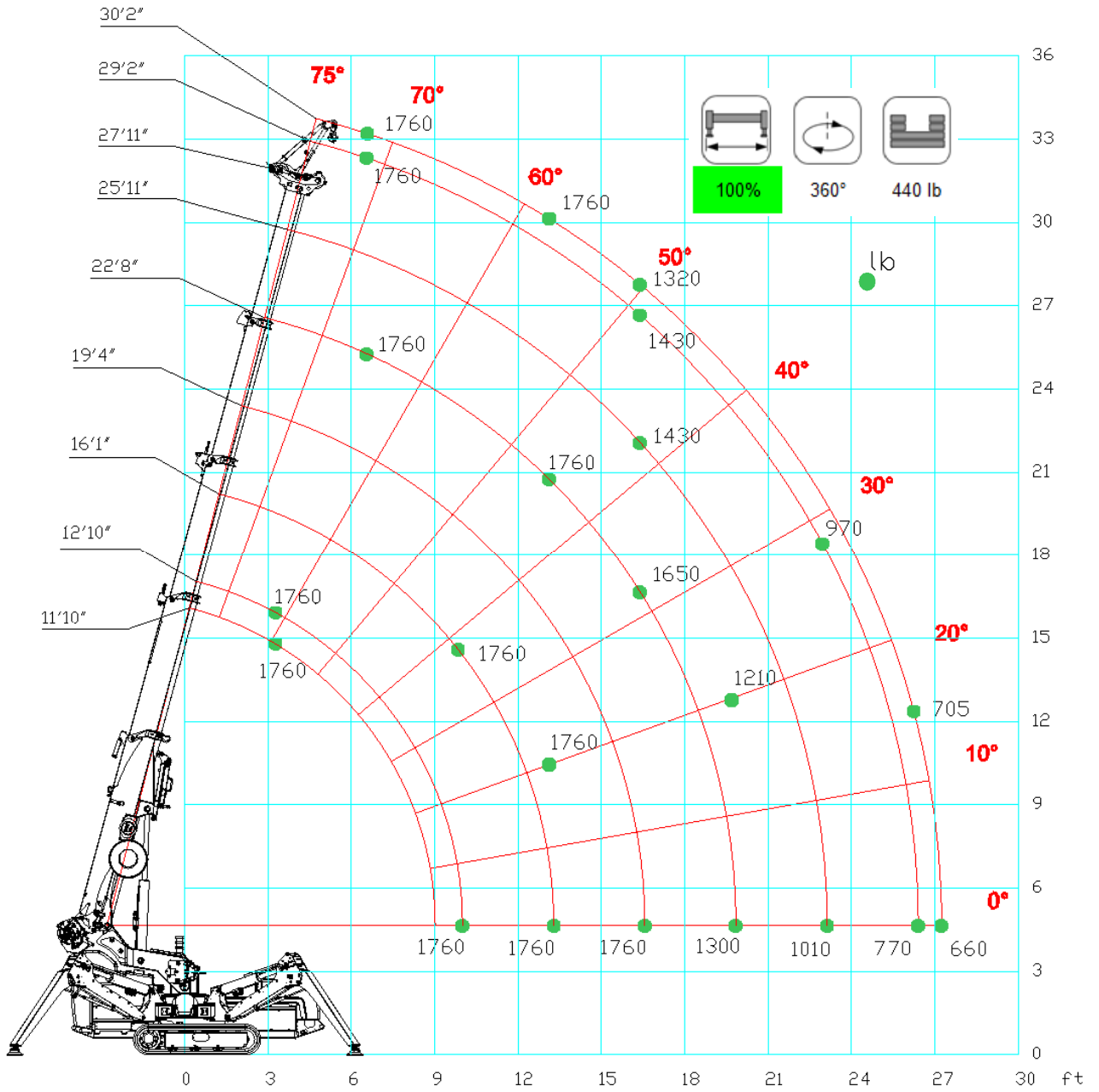
[ft] [lb]							
		100%	360°	440 lb			
	8' 06"	12' 10"	16' 01"	19' 04"	22' 08"	25' 11"	27' 11"
3' 03"	5280	3960	3740	3520	3080		
6' 07"	3740	3740	3080	2420	2420	2200	2200
9' 10"		3080	2420	2200	2090	1980	1980
13' 01"			2420	2090	1870	1760	1760
16' 05"				1782	1650	1430	1430
19' 08"					1298	1210	1100
23' 00"						990	968
24' 11"							880


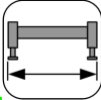
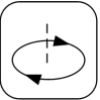

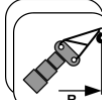
[ft] [lb]							
		50%	360°	440 lb			
	8' 06"	12' 10"	16' 01"	19' 04"	22' 08"	25' 11"	27' 11"
3' 03"	5280	3960	3740	3080	2640		
6' 07"	3740	3740	2640	2200	1980	1870	1760
9' 10"		2156	2090	1980	1760	1650	1540
13' 01"			1188	1166	1144	1122	1100
16' 05"				792	748	726	704
19' 08"					550	506	462
23' 00"						396	352
24' 11"							330


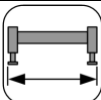
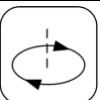
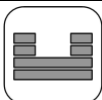
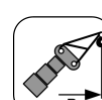


# SPX424

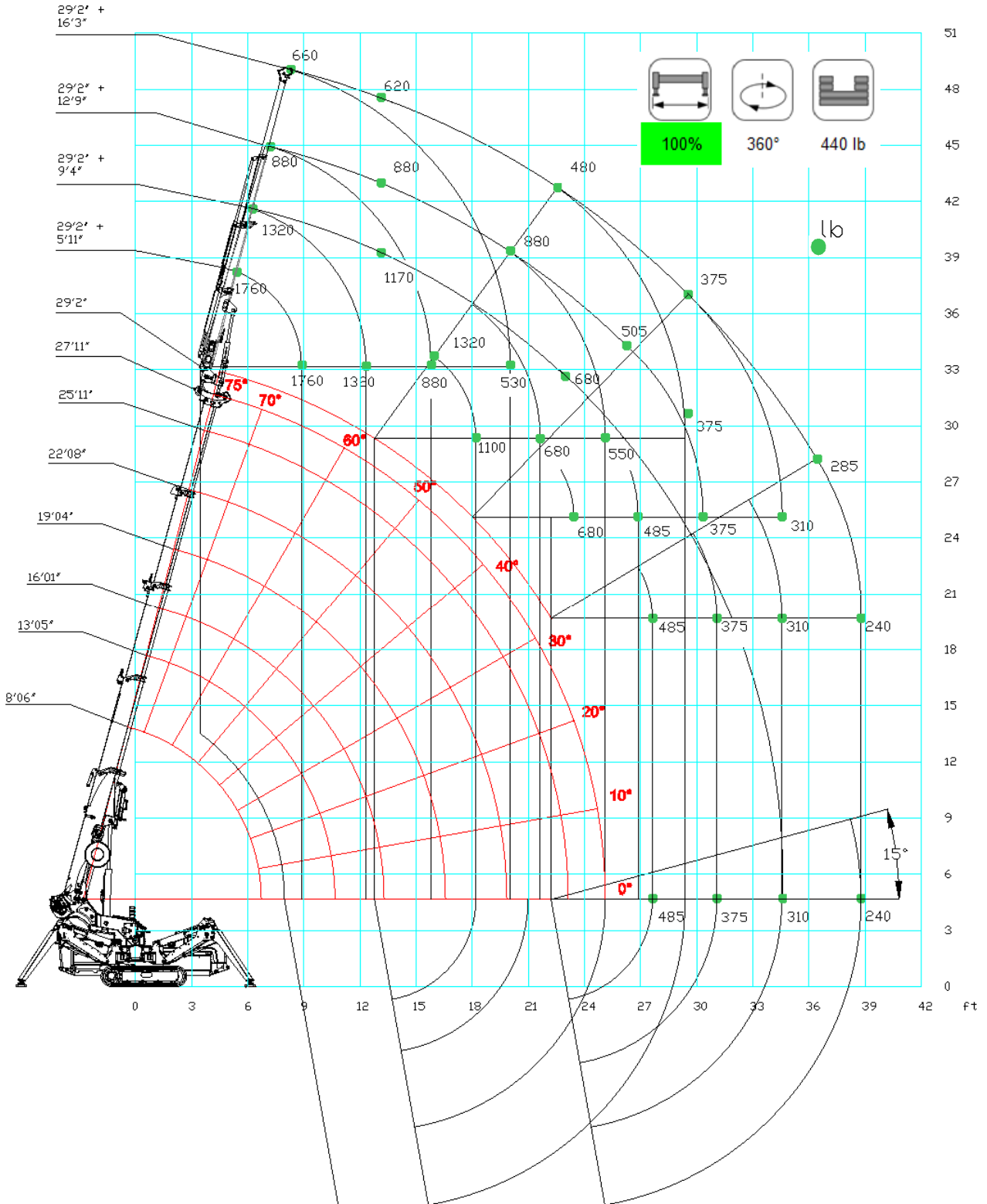
## SPX424 + JIB800GX



[ft] [lb]								
	JIB800GX	100%	360°	440 lb				
	11' 10"	12' 10"	16' 01"	19' 04"	22' 08"	25' 11"	29' 02"	30' 02"
3' 03"	1760	1760	1760	1760	1760			
6' 07"	1760	1760	1760	1760	1760	1760	1760	1760
9' 10"		1760	1760	1760	1760	1760	1760	1760
13' 01"			1760	1760	1760	1760	1760	1760
16' 05"				1760	1650	1430	1430	1320
19' 08"					1298	1210	1100	990
23' 00"						1012	968	880
26' 03"							770	704
27' 03"								660

[ft] [lb]								
	JIB800GX	50%	360°	440 lb				
	11' 10"	12' 10"	16' 01"	19' 04"	22' 08"	25' 11"	29' 02"	30' 02"
3' 03"	1760	1760	1760	1760	1760			
6' 07"	1760	1760	1760	1760	1760	1760	1760	1760
9' 10"		1760	1760	1760	1760	1650	1540	1540
13' 01"			1232	1210	1166	1144	1122	1100
16' 05"				814	792	792	770	770
19' 08"					550	528	506	484
23' 00"						396	374	352
26' 03"							286	286
27' 03"								264

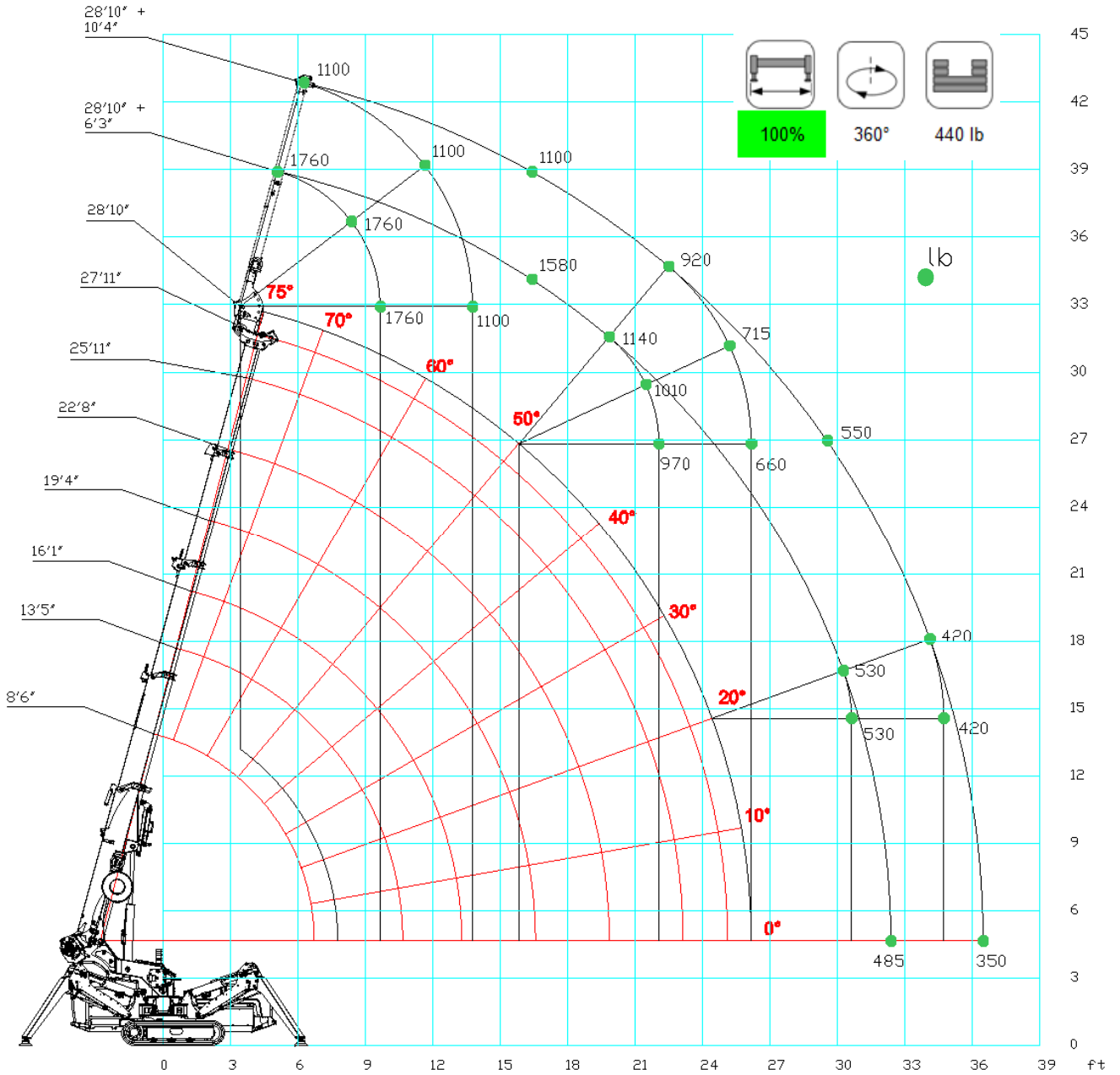
## SPX424 + JIB800.2H1MX


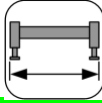
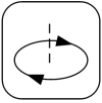
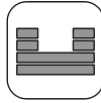
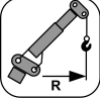



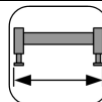
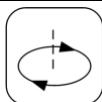
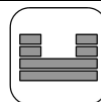
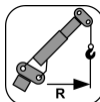
[ft] [lb]				
	JIB800.2H1M X	100%	360°	440 lb
	5' 11"	9' 04"	12' 10"	16' 01"
6' 07"	1760	1320		
9' 10"	1760	1320	880	660
13' 01"	1760	1320	880	616
16' 05"	1496	1320	880	572
19' 08"	1012	1012	880	528
23' 00"	682	682	682	484
26' 03"	506	506	506	440
29' 06"	374	374	374	374
32' 10"		308	308	308
36' 01"		286	286	286
38' 09"			242	242

[ft] [lb]				
	JIB800.2H1M X	50%	360°	440 lb
	5' 11"	9' 04"	12' 10"	16' 01"
6' 07"	1760	1320		
9' 10"	1540	1320	880	660
13' 01"	924	924	880	660
16' 05"	506	506	506	506
19' 08"	264	264	264	264

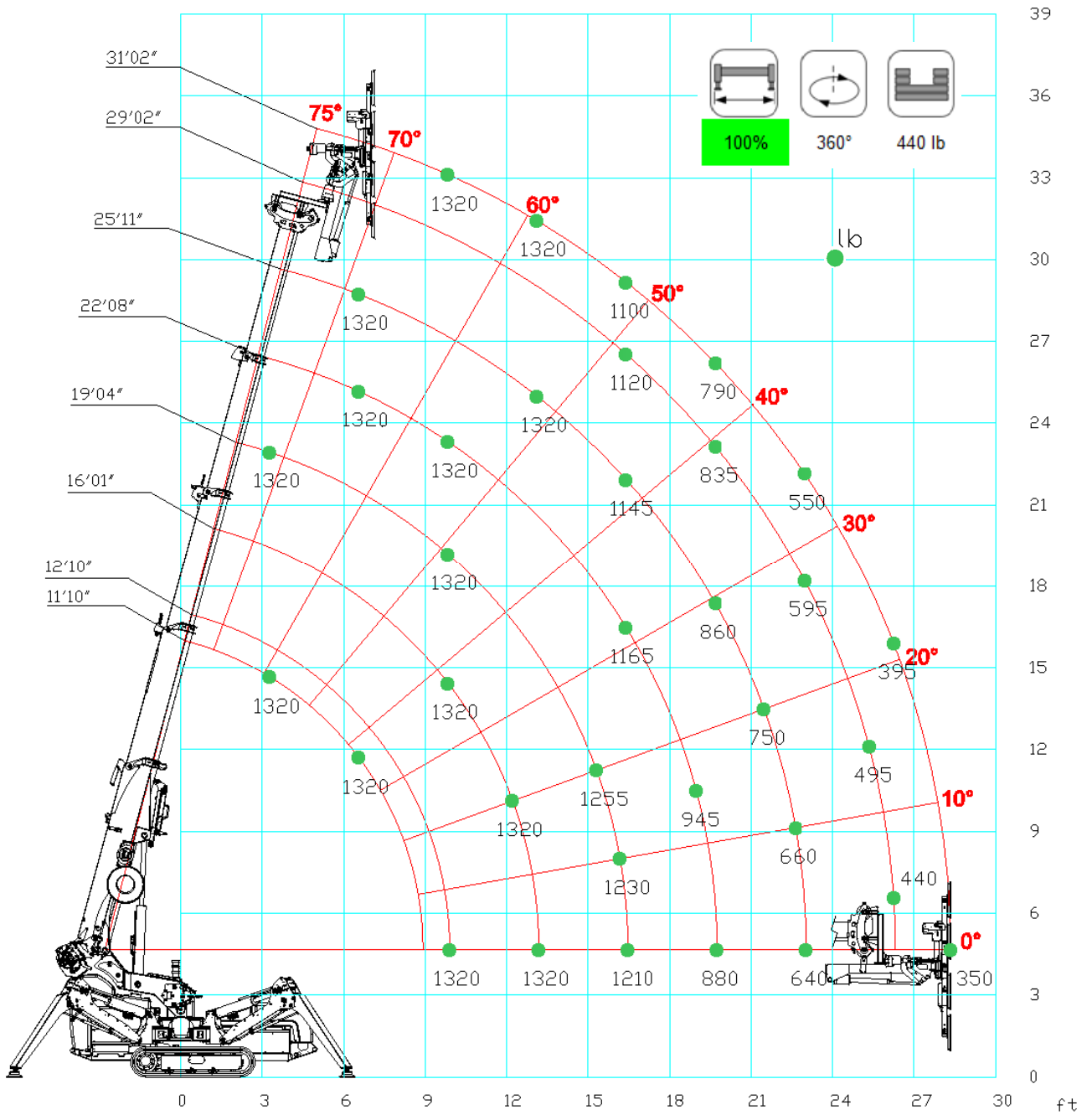
## SPX424 + JIB800.1MX



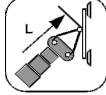
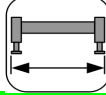
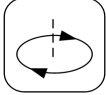
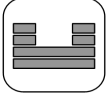
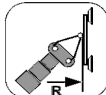
[ft] [lb]				
 JIB 800.1M X	100%	360°	440 lb	
	6' 03"	10' 04"		
6' 07"	1760	1100		
9' 10"	1760	1100		
13' 01"	1760	1100		
16' 05"	1584	1100		
19' 08"	1144	1100		
23' 00"	880	880		
26' 03"	660	660		
29' 06"	550	550		
32' 10"	440	440		
36' 01"	396	396		
36' 09"		352		

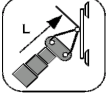
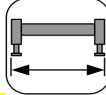
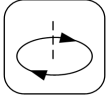
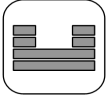
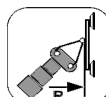
[ft] [lb]				
 JIB 800.1M X	50%	360°	440 lb	
	6' 03"	10' 04"		
6' 07"	1760			
9' 10"	1760	1100		
13' 01"	1122	1122		
16' 05"	682	682		
19' 08"	462	462		
23' 00"	286	286		

## SPX424 + MV600.3E

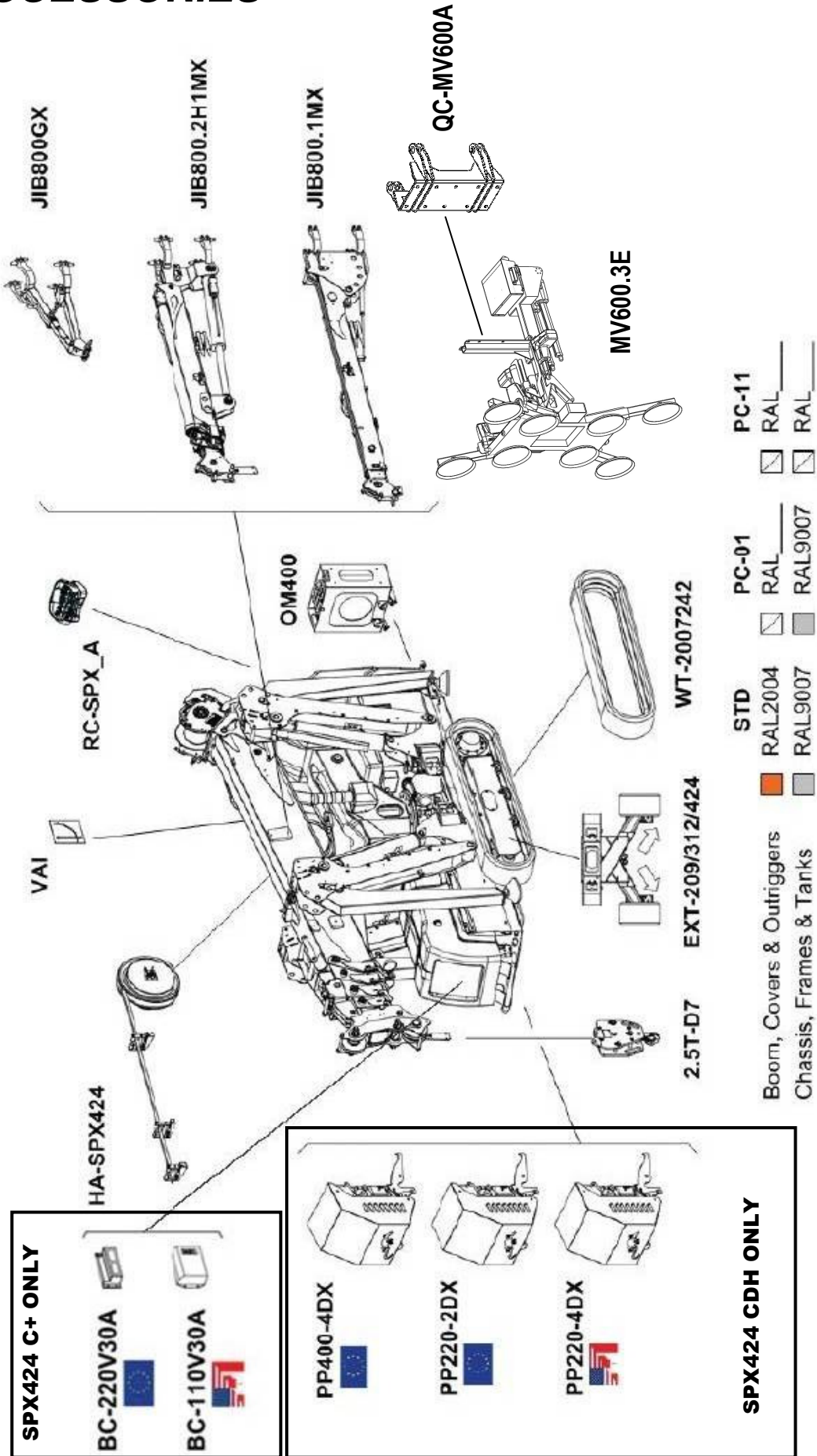




[ft] [lb]								
	MV600.3E	100%	360°	440 lb				
	11' 10"	12' 10"	16' 01"	19' 04"	22' 08"	25' 11"	29' 02"	31' 02"
3' 03"	1320	1320	1320	1320	1320			
6' 07"	1320	1320	1320	1320	1320	1320	1320	1320
9' 10"		1320	1320	1320	1320	1320	1320	1320
13' 01"			1320	1320	1320	1320	1320	1320
16' 05"				1210	1166	1144	1122	1100
19' 08"					880	858	836	792
23' 00"						638	594	550
26' 03"							440	396
28' 03"								352

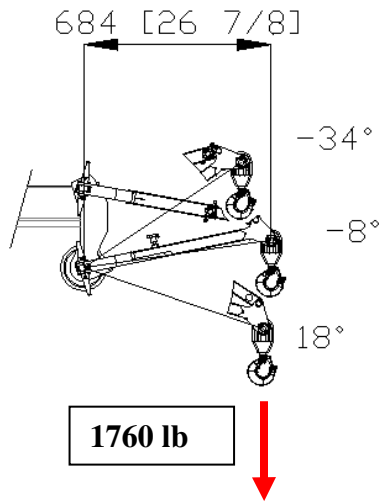
[ft] [lb]								
	MV600.3E	50%	360°	440 lb				
	11' 10"	12' 10"	16' 01"	19' 04"	22' 08"	25' 11"	29' 02"	31' 02"
3' 03"	1320	1320	1320	1320	1320			
6' 07"	1320	1320	1320	1320	1320	1320	1320	1320
9' 10"		1320	1320	1320	1320	1320	1210	1100
13' 01"			1078	1034	990	946	880	836
16' 05"				616	594	572	550	506
19' 08"					352	330	308	264

## ACCESSORIES



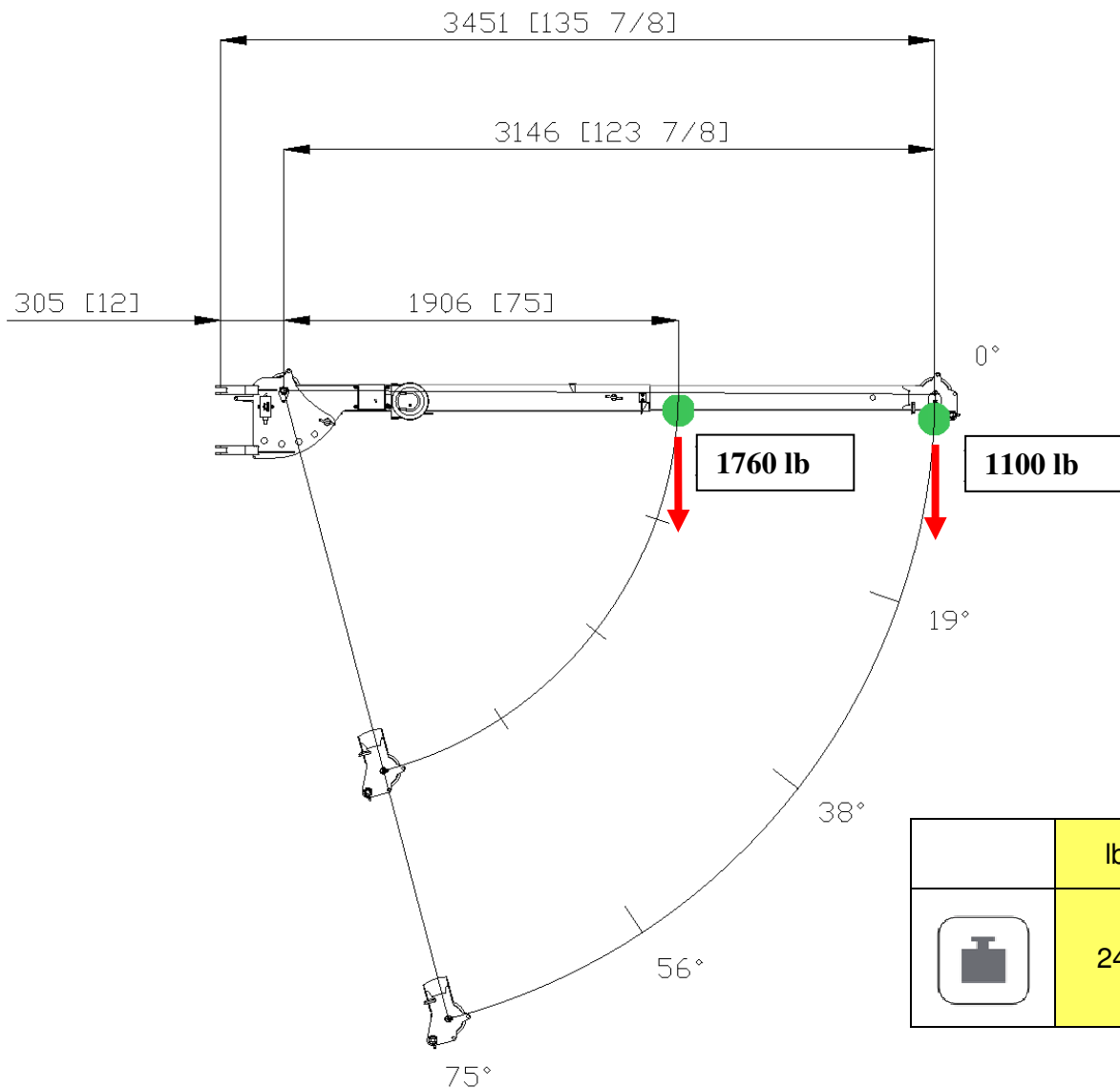
## ACCESSORIES FEATURES

### JIB800GX



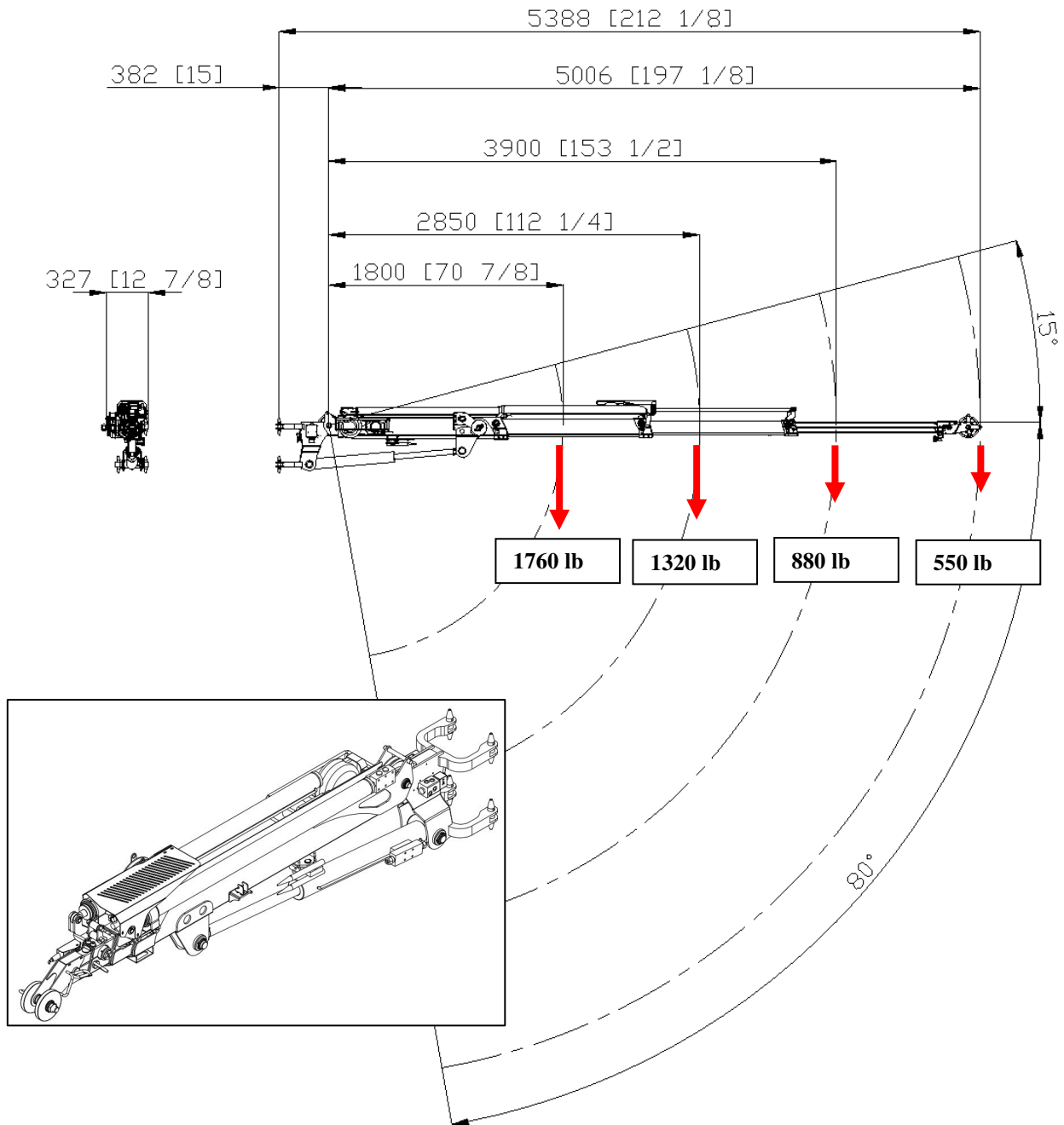
	lb
	55

### JIB800.1MX

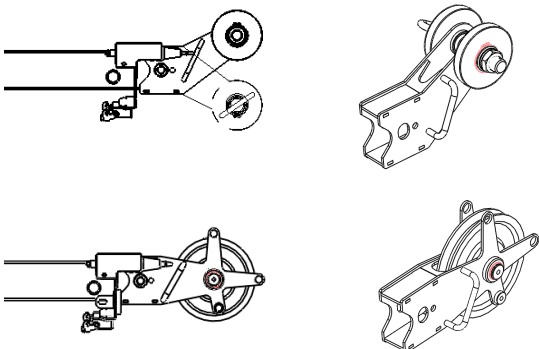


	lb
	240

## JIB800.2H1MX

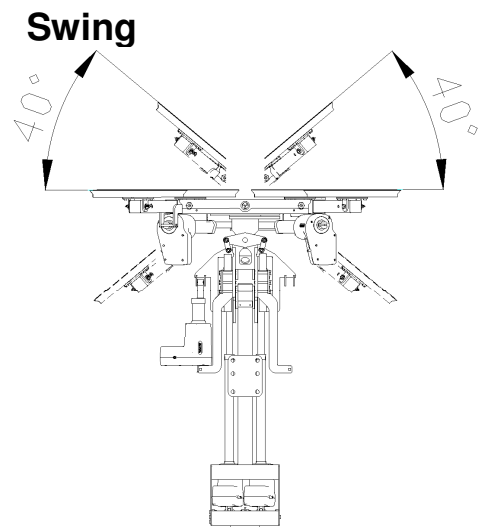
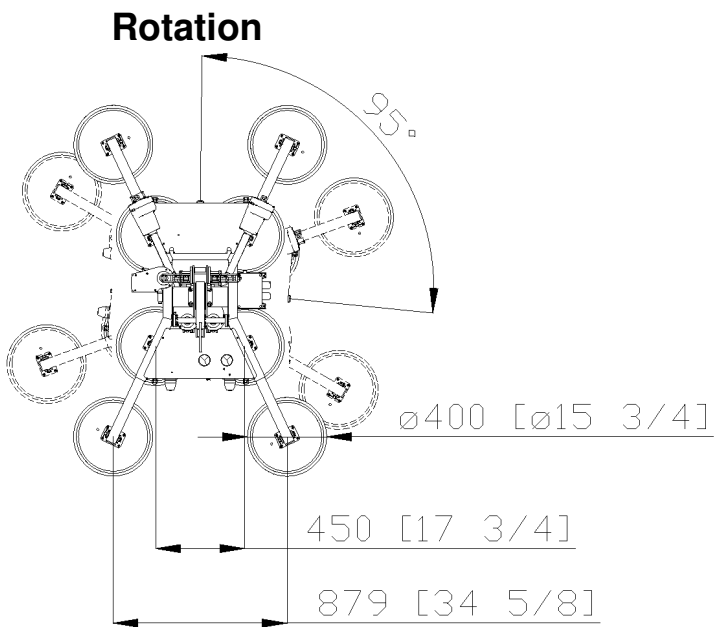
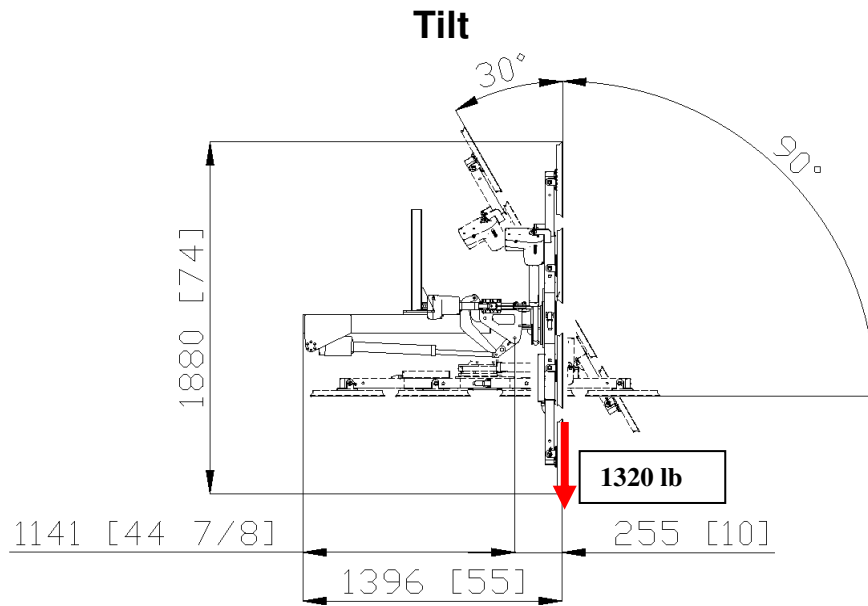


### HEAD CONFIGURATIONS:



	lb
	375

## MV600.3E



	lb
	440

## SYMBOLS

	Weight		Chart Wheels		Engine		Jib length and angle
	Counterweight		Minipicker		Diesel Fuel		Jib Length
	Crane		Back Wheel Point Loading		Gasoline Fuel		Jib Radius
	Travel Speed		Front wheel Point Loading		Tank		Hydraulic Jib Length
	Gradeability		Travel Speed		Battery		Hydraulic Jib Radius
	Outrigger Load		Gradeability		Power		Mechanical Jib Length
	Track Loading		Working Radius		Boom Angle		Mechanical Jib Radius
	Outriggers Setup		Hookblock		Boom Length		Manipulator Length
	Ext Tracks Width		Slewing		Boom Radius		Manipulator Radius
	Chart On Tracks		Slewing Locked		Jib Hook Radius		Maximum inclination of the machinery
	Jib on board		Without jib on board				

### Remarks referring to load charts

- For the calculation of the load charts at least a wind speed of 30 ft/s (20 mph) and regarding the load a sail area of 1m<sup>2</sup> (1.2 yd<sup>2</sup>) per metric ton (2205lb) load and a wind resistance coefficient of 1.2 on the load have been taken into account. For lifting of loads with large sail areas and/or high wind resistance coefficients the maximum wind speed as stated in the load charts has to be reduced.
- Lifting capacities are given in pounds.
- The weight of the hook blocks and hooks is part of the load and therefore it must be deducted from the lifting capacities.
- Working radii are measured from the slewing centre.
- The lifting capacities given for the telescopic boom apply if the folding jib is removed.
- Subject to modification of lifting capacities.



NOTES

A large, empty rectangular box with a thin black border, intended for taking notes.



DEALER



ORMET S.p.A. via Campardone, 7 Z.I. 31014 Colle Umberto (TV)  
Italy tel. +39 0438 434443 fax +39 0438 430115  
[www.jekko.it](http://www.jekko.it) - [www.ormet.it](http://www.ormet.it) - [info@jekko.it](mailto:info@jekko.it)